



# SUSTAINABLE SOLUTIONS FOR INDUSTRY

Engineering  
Consulting  
Manufacturing  
Flue Gas Treatment



SCCM  
ALP.

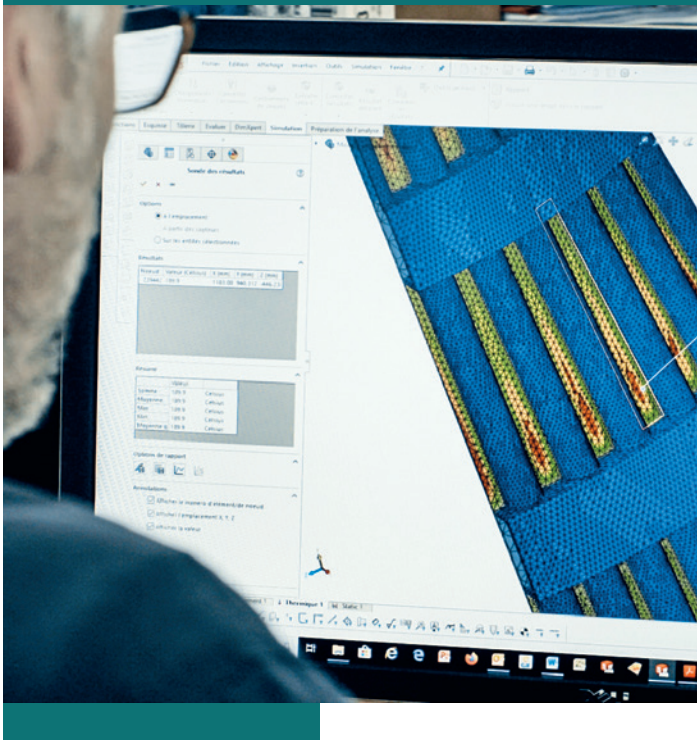
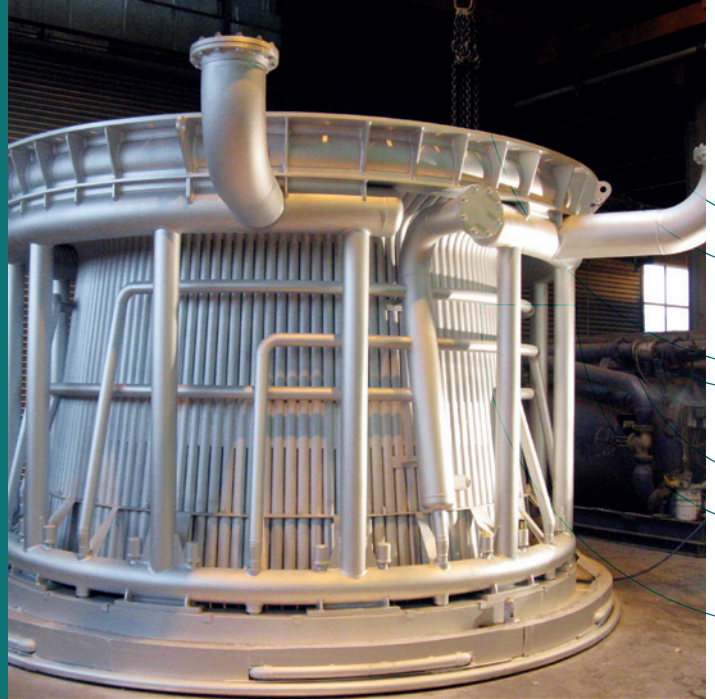
Industrial Sustainable Solutions

# Sustainable industry: less energy and less pollution

The integration of sustainable development is now an obligation for industry in the transition to a circular, low-carbon and competitive economy.

In concrete terms, this requires the adoption of production practices aimed at:

- Minimising environmental impact
- Reduce energy consumption.
- Use more sustainable raw materials.
- Improving worker health and safety.
- Promote the reuse and recycling of materials.
- Reduce pollutant levels in the atmosphere.



## SCCM ALP : designer and manufacturer of sustainable industrial solutions

We create solutions that consider environmental issues (de-pollution, energy efficiency, etc.) while ensuring the safety of personnel and the lifespan of installations.

Based in Chambéry, in the heart of Savoie in France since 1931, we are a local European partner in the following fields:

### Industry

The design and manufacture of water-cooled elements to capture fumes in the iron and steel, metallurgy, cement and carbonization industries, etc...

### Environment

the design of transport, storage and dosing installations for solid materials and reagents to be injected to clean up the fumes released into the atmosphere.

Sustainable solutions  
for a responsible industry:  
working together  
for a desirable future!





# Our areas of excellence

SCCM ALP has a wide range of expertise, from the design and manufacture of cooled equipment for industries using high-temperature processes to the collection, filtration and treatment of the smoke generated by these processes.

## Engineering and design

SCCM ALP provides high value-added technical solutions for particularly exothermic and energy-intensive industrial processes, such as the steel industry.

We start from the existing (structure, water circuit...) to maximise energy, economic and environmental efficiency gains, while minimising modifications and the financial investment of our clients.

Our engineering capability allows us to build solutions using 3D modelling, CAD (Computer Aided Design) simulation of flue gas capture systems, including secondary emission control.

We have the capacity to model the complete distribution of the water flow of the tubular elements cooling the fumes existing at the different stages of the system (furnace roof, post-combustion chamber, "e-hole" evacuation elbow, etc.). We thus obtain all the relevant data for the gaseous effluents generated during all the steel melting operations to guarantee the best performances and to make the durability of our equipment more reliable right from the design stage.



## Consulting

At the request of its clients, SCCM ALP can carry out on-site studies to characterise gas emissions and audit the cooled equipment (pressure drops, wall thickness measurements....) during the various phases and audit the water circuits. We propose to calculate the existing cooling water distribution considering the geometrical data and all the connected elements to provide the client with an overview and propose possible optimisations.



## Manufacturing

We design, manufacture locally in our 2250m<sup>2</sup> workshop, deliver and install on site complete tubular cooling and dedusting units, combining cooled elements and dry liner. They can be adapted and upgraded to suit fume extraction systems.

**We have expertise in:**

- Boilermaking
- Mounting
- Welding
- Water test, flow test

**SCCM ALP** designs and manufactures all its equipment with sustainability in mind. The steel that we work with and that our customers produce is 100% recyclable.

We also offer on-site installation services for a comprehensive turnkey approach

## Integrator of dry injection flue gas treatment

**SCCM ALP** is also, through the integration in 2016 of ALP Process, a long-standing player in the study, integration and installation of turnkey solutions for the treatment of flue gases, by storing, dosing and injecting reagents (lime, activated carbon, sodium bicarbonate, etc.). This injection makes it possible to limit the toxic pollutants contained in industrial fumes, particularly those from incineration. Depending on the requirements, we also offer automation, on-site installation, assembly, start-up and operator information and training.

In order to ensure that our customers can be sure of the efficiency of their investment, we even offer a test skid for hire.

We work with all local authorities and industries that need to clean up their flue gases. (Over 120 incinerators equipped in France and abroad)

## Specialised technical trade

With our expertise, **SCCM ALP** is also a representative of 3 brands specialised in industrial solutions and installations. They cover various fields of activity, from industrial crushers to storage silos, including transfer screws, dosing conveyors and safety valves:

- OFFICINA 2000
- STANELLE Silos + Automation GmbH
- SOFIS Global







# More than 90 years of service to industry

We are a designer and manufacturer of solutions for industrial flue gas treatment, transport, storage, and dosing of powders.

## Our history

SCCM ALP is the result of the merger of two Savoyard companies with specific know-how:

**SCCM** (founded in 1931 - Chambery Boilermaking Company), specialised in the design, manufacture, and monitoring of water-cooled and mechanical equipment for the steel industry. SCCM has turned its attention to water-cooled components, including water-cooled ducts, hoods and afterburner chambers.

**ALP PROCESS** (founded in 1976) specialises in industrial engineering, integration, installation of turnkey solutions for industrial smoke filtration, dosing, and transport of powders... It has focused more on the treatment of smoke from incinerators and sludge treatment. Indeed, the powders used, such as lime, lignite coke and sodium bicarbonate, make it possible to drastically reduce the levels of sulphur and hydrochloric and hydrofluoric acids.

Both companies have evolved over the years to design and develop innovative solutions.

A first merger took place in 2016, before forming a single entity in 2020.

## Our values

### Professionalism

We commit our expertise to our clients, always aiming for efficiency. Our organisation involves rigour and consistency.

### Authenticity

We are careful to remain ourselves and to respect others. We have the right to make mistakes, but we take responsibility for them. We want to express ourselves with kindness but without complacency.

### Team spirit

We believe that listening, helping each other and respecting each other's work allow us to achieve our objectives together and to progress continuously.

### Creativity

We are constantly innovating in our study and design methods and our clients' constraints are the source of inspiration for our solutions.

### Sustainability

We work every day to create solutions for our customers that are as high-quality and energy-efficient as possible, while preserving their installations over time.

## Our quality system

**SCCM ALP is ISO 9001 and ISO 45001 certified.** We ensure the **identification** and **traceability** of all operations, all products, thanks to our ERP system EVERWIN V.23

**Hydraulic tests:** for water cooling installations, we are equipped with a test bench which allows us to carry out a complete test with verification of the hydraulic characteristics before sending to the customer. It should be noted that we can also carry out this test on the customer's site, as the bench is mobile.

**Reagent injection tests:** for the dry treatment of incineration flue gases, we offer a Skid Test for hire to add to your installation on site to validate your investment.

**Origin of materials:** we guarantee that most of our materials are sourced from Europe.

**Welding supervision:** since January 2023, an IWT IWS welding technologist has been supervising and guaranteeing our welding operations.

**Technical qualification:** the qualified operators on site are certified on the welding and control processes (Level 2 penetrant testing by our Workshop Manager).



# They have already placed their trust in us



In the geographic heart of Europe

22 Rue de la Digue  
73160 COGNIN – France  
+33(0)4 79 62 19 63  
contact@sccm-alp.com  
[www.sccm-alp.com](http://www.sccm-alp.com)

